

# Fire Sleeve (Slim) - Ducting

## For use with Titon's HRV Q Plus and CME Q Plus Ranges

**Slim Fire Sleeves prevent the spread of fire where plastic pipes penetrate fire compartment walls.**

They are specifically designed to be slim for applications where there is limited space around the duct.

### Regulations

Building Regulations impose limitations on all pipes passing through fire compartment walls and floors. QRS Vent Duct Slim Sleeves allow plastic ducts to meet the requirements of the Building Regulations. QRS Vent Duct Slim Sleeves have been tested according to BSEN 1366-3: 2009 where various plastic duct sizes have met insulation and integrity criteria for this standard for up to 2 hours.

## Features & Benefits

- Tested to BSEN 1366-3: 2009
- Tested with Uncapped/Uncapped (U/U) duct configurations as required for ventilation ducts
- Up to 2 hour fire rating
- Very slim-line (saves ceiling space)
- Suitable for masonry walls or plasterboard partitions
- Suitable for insulated and non-insulated partitions
- Can be retrofitted
- No mechanical fixings required
- Robust galvanised steel shell
- Performance unaffected by weathering (Type X Durability)

## Compositions

The QRS Vent Duct Slim Sleeves consist of a flexible galvanised steel shell containing graphite based intumescent material.

They are manufactured to suit flat ducts of 110x54mm, 204x60mm and 220x90mm.

## Durability

Tested to Type X durability which means the QRS Vent Duct Slim Sleeves can be installed in conditions exposed to weathering. QRS Vent Duct Slim Sleeves are expected to last the lifetime of the building.

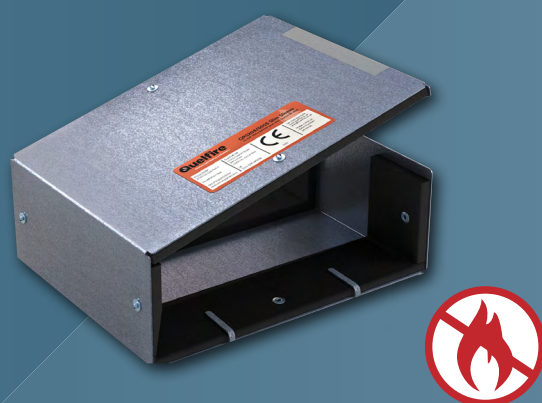
QRS CE/UKCA Marked Fire Sleeves are expected to last the lifetime of the building.

## Applications/Installation

The QRS Vent Duct Slim Sleeves should be placed around the ventilation duct, positioned centrally within the partition and should be flush or protrude from each face of the wall. The plasterboard should be cut to a tight fit around the QRS Vent Duct Slim Sleeves, and any gaps should be sealed with the Quelstop Intumescent Acrylic Sealant, part number QSS310.

For all sleeve types, please refer to manufacturers installation guidance prior to system design or installation.

Fire Sleeve



## Performance

Product Code	Duct Size (mm)	Space needed around duct to fit QRS Slim Sleeve (mm)	Recommended aperture (mm)	QRS length (mm)	Fire Rating
QRS110/54SS	110 x 54	5	122 x 66	140	120 minutes
QRS204/60SS	204 x 60	5	216 x 72	140	90 minutes
QRS220/90SS	220 x 90	9	241 x 112	140	60 minutes

QRS Slim Fire Sleeve installed in plasterboard partition

