

Purge Ventilation Unit

Easy to install ventilation solution

For use in residential dwellings

Titon's Purge ventilation unit has been designed to satisfy the Building Regulations Part F 2010 requirement for purging as set out in *Appendix B. It allows the rapid removal of stale, odorous and poor quality air from the dwelling allowing a healthier more comfortable environment to be reinstated.

Our Purge unit can be used in an independent purge system in its own right or integrated into our own HRV Q Plus MVHR system to provide additional dedicated purge ventilation.

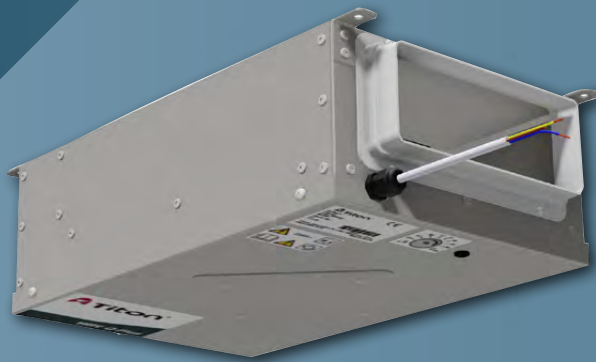
Purge ventilation can also be used to improve thermal comfort.

*Manually controlled intermittent ventilation of rooms or spaces at a relatively high rate to rapidly dilute high concentrations of pollutants and/or water vapour from occasional activities, equivalent to 4 air changes an hour.

Features & Benefits

- Low Profile
- High efficiency EC fan
- 100% variable speed control for commissioning set point
- 90° configurable option
- Accepts configurations of 220x90mm rectangular ducting and Ø150mm or 220x90mm with adaptor for 90° option
- For use in rooms up to 45m²
- In line configurable option
- Simple 1 setting setup
- Light weight for easy handling
- Easy and quick to install
- Low sound levels
- IPX2 water resistant

Purge



Ceiling cover kit available



Powered Damper Actuator

Product Codes

TP625 - Purge Unit
TP629 - Ø150 Back Draft Damper
TP630 - Powered Damper Actuator
TP631 - Ceiling Cover Kit (Ø150 only)
TP502 - Boost Switch (latching)

Standards

EU RoHS Directive Compliant.

Conforms to requirements of EC council Directives relating to electromagnetic Compatibility and Electrical Safety:

2006/95/EC (LVD), 2004/108/EC (EMC)
 EN 60335-1:2002/A2:2006, EN 60335-2-80:2003/A1:2004.

CE and UKCA marked.

Specification

Dimensions:

510mm long x 300mm Wide x 150mm Deep

Weight: 7.2Kg

Finish: Natural Zintec

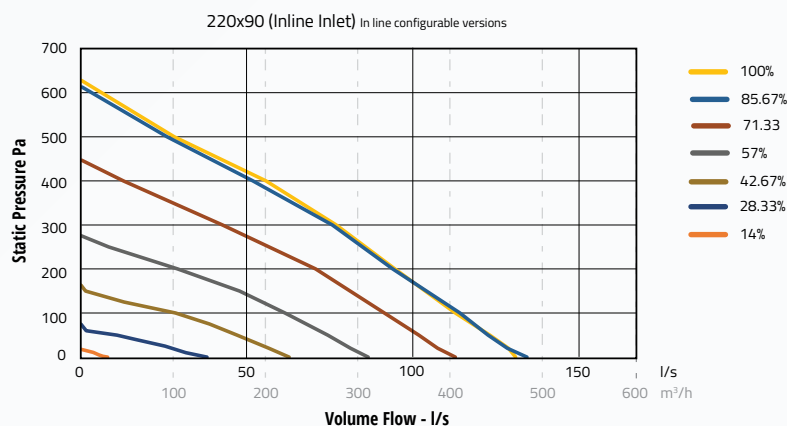
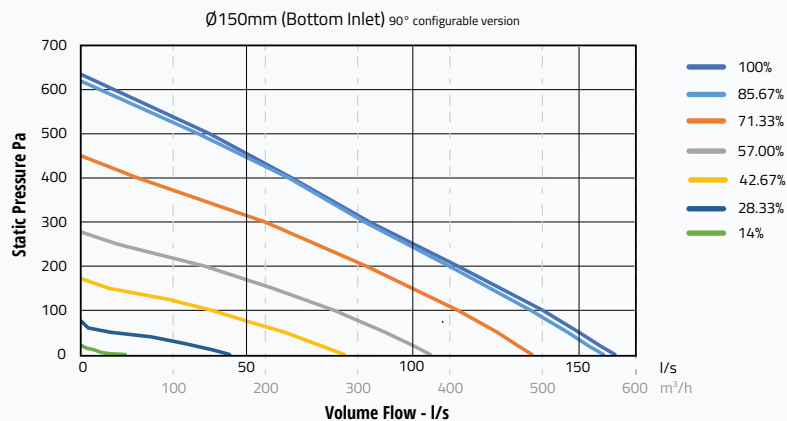
Materials: Zintec sheet steel casing

Guarantee Period: 2 Years

Electrical: 230V - 50/60Hz, 3A fuse

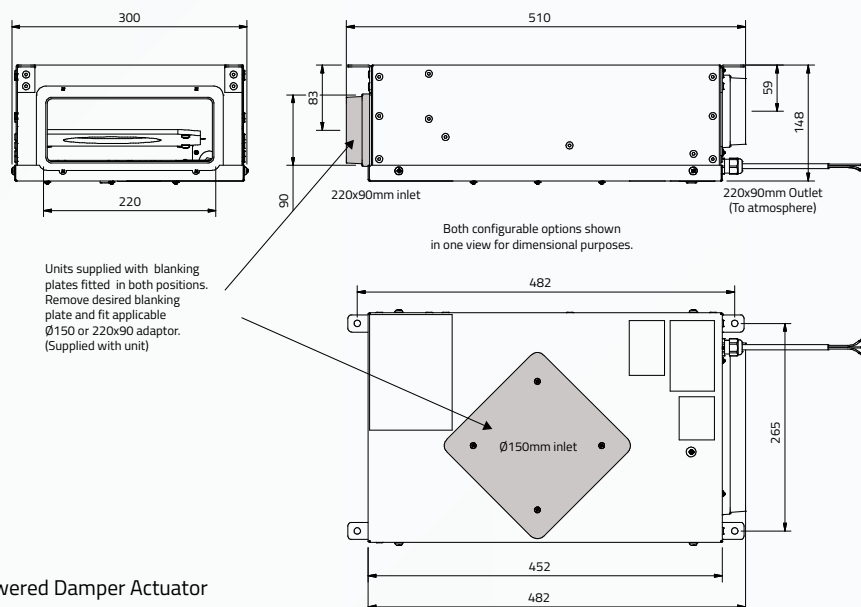
Maintenance: Service subject to local environment - see product manual.

Performance

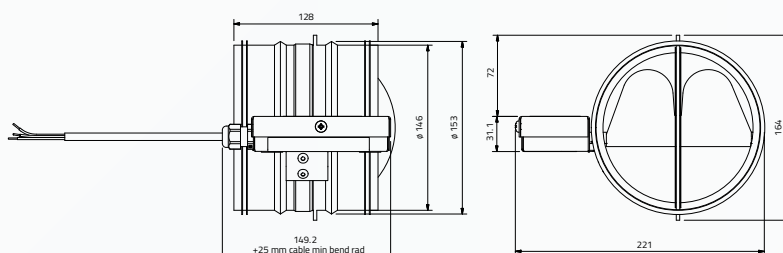


Drawing and Dimensions

Purge Ventilation Unit



Powered Damper Actuator



Dimensions in mm