

## Commercial Hinge Range Enhancement

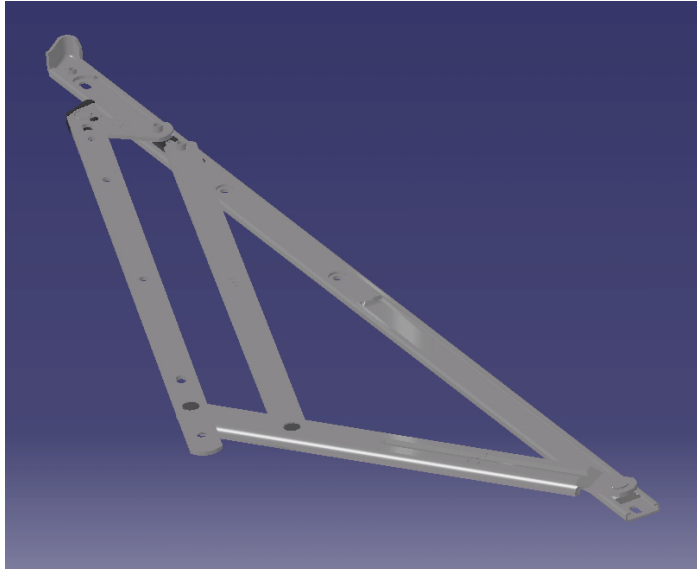
---

Securistyle is replacing the existing Sterling Hinge Range with an Enhanced Sterling Hinge Range, and the existing Storm Range with Storm Balanced.

The implications of these enhancements are:

### Enhanced Sterling

---



### Carrying Capacities

---

All carrying capacities have been increased by varying degrees as detailed below:

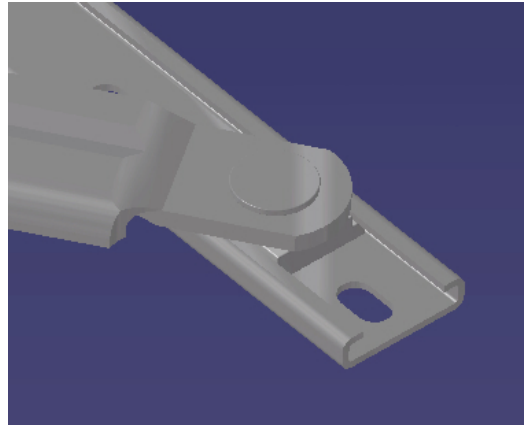
Part Code	Max Vent Height	Max Weight	Opening Angle
ST10	635mm	37kg	50°
SPT10	640mm	40kg	50°
ST12	787mm	45kg	50°
SPT12	800mm	50kg	50°
ST16	1090mm	55kg	50°
SPT16	1100mm	65kg	50°
STH16	1100mm	100kg	30°
SPTH16	1100mm	100kg	30°
ST22	1500mm	75kg	45°
SPT22	1500mm	75kg	45°
ST22W	1500mm	75kg	45°
SPT22W	1750mm	100kg	20°
ST26	2000mm	100kg	20°
SPT26	2500mm	180kg	20°
Part Code	Max Vent Width	Max Weight	Opening Angle
STS10	660mm	38kg	85°
SPS10	660mm	38kg	85°
STS16	838mm	47kg	90°
SPS16	838mm	47kg	90°

Enhancements have been achieved through revised geometries and a strengthened bottom pivot on SPTH16, SPT22W & SPT26.

### **Diecast Zinc Alloy Pivot Block**

---

Inserted within the track section, the pivot block locates and supports the 3<sup>rd</sup> link pivot rivet. This provides increased bearing surface for the pivot reducing vent drop throughout the products guaranteed 30,000 cycles.

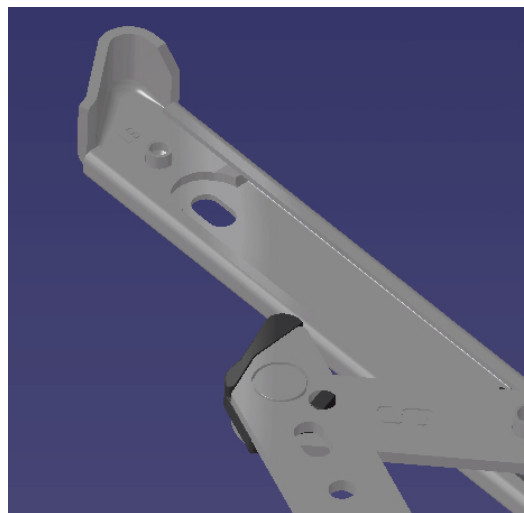


### **Re-designed End-Point & Vent Arm**

---

Gust load resistance has been improved via a re-designed end-point and vent arm. Testing at ATi reported an increased gust load resistance in excess of 135 psf.

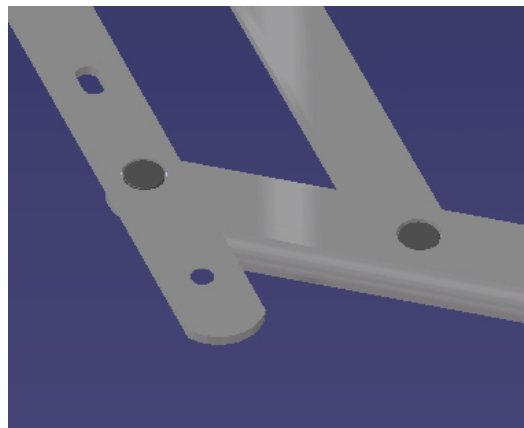
Ref: ATi Test Report No. 59757.01-122-44



### **Endurance**

---

Endurance has been re-confirmed at new increased capacities through the inclusion of coated rivets.

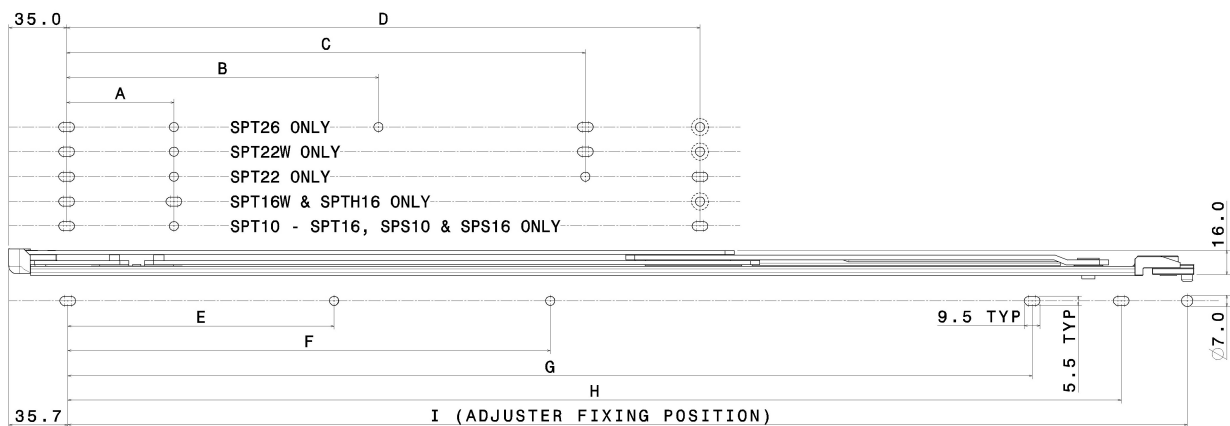


## Fixing Positions

All fixing positions have remained the same with the exception of SPTH16, SPT22W & SPT26:

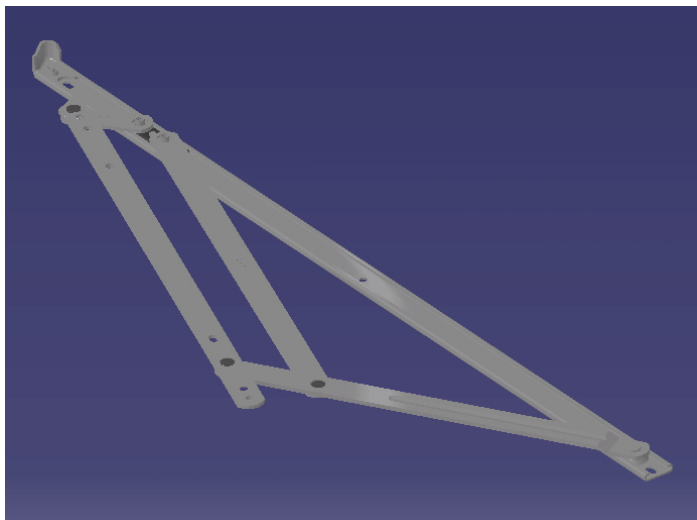
Description	A	B	C	D	E	F	G	H	I
<b>SPT10</b>	40.8	-	-	165.1	-	177.8	-	218.2	256.2
<b>SPT12</b>	64.5	-	-	190.1	-	212.7	-	269.0	307.0
<b>SPT16/SPT16W</b>	118.4	-	-	241.2	215.7	304.0	-	370.6	408.6
<b>SPTH16</b>	118.4	-	-	241.2	133.7	222.0	-	370.6	408.6
<b>SPT22</b>	65.0	-	203.2	317.4	251.3	418.3	-	523.0	561.0
<b>SPT22W</b>	80.0	-	235.75	350.0	128.4	295.4	-	526.5	564.5
<b>SPT26</b>	65.0	189.0	314.4	383.9	161.4	321.4	584.5	638.5	676.5
<b>SPS10</b>	34.0	-	-	165.1	-	177.8	-	218.2	-
<b>SPS16</b>	65.0	-	-	241.2	-	304.0	-	370.6	-

**Note:** Above hole fixings also apply for BX (Offset) variants.



## Storm Balanced

---



This product has been introduced to provide a balanced range of hinges to replace existing STORM.

The product range has increased from 4 to 7 hinges consisting of – 5 Top Hung/Awning and 2 Side Hung/Casement.

However, for customers who require a low inventory non-balancing hinge range the 10” and 16” Storm Balanced side hung hinges can be used as top hung hinges. Along side the 22” and 26” variants this mirrors the original Storm range.

## Carrying Capacities

---

Carrying capacities will now be as detailed below:

Part Code	Max Vent Height	Max Weight	Opening Angle
STORM10	762mm	50kg	75°
STORMB10	635mm	37kg	50°
n/a	n/a	n/a	n/a
STORMB12	787mm	45kg	50°
STORM16	1120mm	63kg	50°
STORMB16	1090mm	55kg	50°
STORM22	1321mm	75kg	90°
STORMB22	1500mm	75kg	45°
STORM26	2200mm	120kg	20°
STORMB26	2000mm	100kg	20°
Part Code	Max Vent Width	Max Weight	Opening Angle
STORM10	660mm	38kg	85°
STORMBS10*	660mm	38kg	85°
STORM16	838mm	47kg	90°
STORMBS16*	838mm	47kg	90°**

\*Part code tbc.

\*\*Note 90° max opening as before but geometry path different.

## Fixing Positions

Fixing positions for the STORM Balanced Range will be as follows:

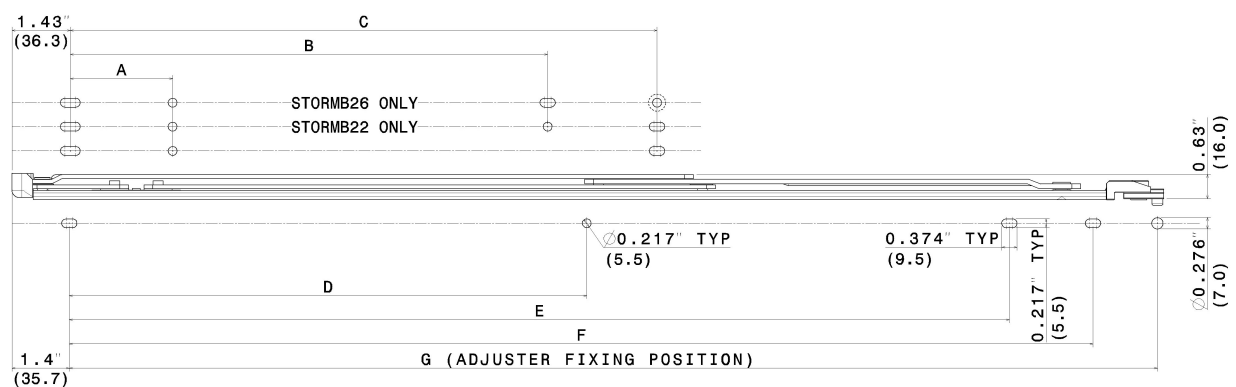
Description	A	B	C	D	E	F	G
<b>STORMB10</b>	1.55 (39.4)	-	6.44 (163.7)	7 (177.8)	-	8.59 (218.2)	10 (256.2)
<b>STORMB12</b>	2.48 (63.1)	-	7.43 (188.7)	8.37 (212.7)	-	10.59 (269)	12 (307)
<b>STORMB16</b>	4.61 (116.9)	-	9.44 (239.8)	11.97 (304)	-	14.59 (370.6)	16 (408.6)
<b>STORMB22</b>	2.5 (63.6)	7.94 (201.8)	12.44 (316)	16.47 (418.4)	-	20.59 (523.1)	22 (561.1)
<b>STORMB26</b>	2.5 (63.6)	11.68 (296.8)	14.36 (364.8)	12.67 (321.7)	23.01 (584.5)	25.06 (636.5)	26.5 (674.5)
<b>STORMBS10*</b>	1.28 (32.6)	-	6.44 (163.7)	4.79 (121.7)	7 (177.8)	8.59 (218.2)	-
<b>STORMBS16*</b>	2.5 (63.6)	-	9.49 (241.2)	11.97 (304)	-	14.59 (370.6)	-
<b>STORME16</b>	2.5 (63.6)	-	9.44 (239.8)	4.98 (126.5)	-	14.59 (370.6)	-

\*Part Code and hole fixings tbc.

Dimensions out of Brackets = **Inches**

Dimensions in Brackets = **Millimetres**

**Note:** Above hole fixings also apply for BX (Offset) variants.

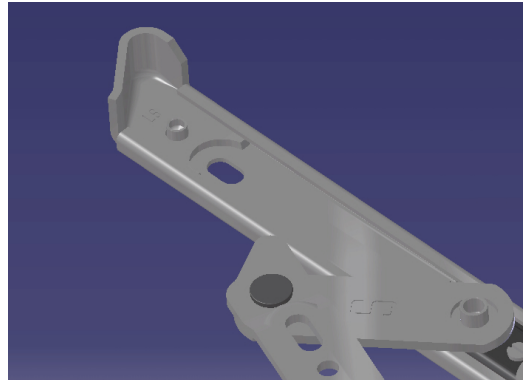


## End Point

---

Gust load resistance has been re-confirmed at ATi reporting a gust load resistance in excess of 162 psf.

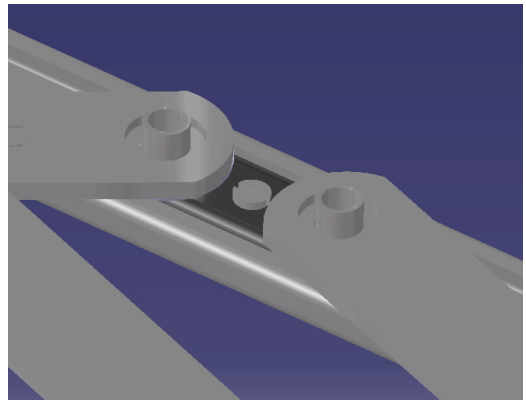
Ref: ATi Test Report No. 59757.01-122-44



## Friction Slider

---

The friction screw in the composite slider is located between the 1<sup>st</sup> & 2<sup>nd</sup> Links on the STORM Balanced hinge range.



## Endurance

---

Increased resistance to wear at essential pivot points through the inclusion of coated rivets.

