

# Intermittent Fans - Centrifugal

## Extract Fans

### For use in residential or non-residential applications

Ideal for air-extraction in bathroom and small premises. A powerful extract fan, designed to overcome the resistances of long ducting systems. Units can be wall/panel and ceiling mounted: designed for surface or flush (plasterboard) installation.

#### Version

**Humidistat & timer** - The fan is provided with an electronic circuit having a humidity sensor on board (adjustable from 50% to 95% RH) and a timer, adjustable from  $\pm 1'$  to 25'. Operation: when the percentage of relative humidity is higher/lower than the pre-set threshold, the fan is automatically activated/deactivated. After switching off, the fan continues to run for the pre-set period of time.

### Features & Benefits

- IPX4 protection degree
- Aesthetic front flat cover for modern interior design easily removed for cleaning
- Removable filter in PP to protect the impeller and the motor. Easy to be removed for cleaning
- Integral back-draught shutter to prevent air flowing back into the room when the fan is off
- Improved performance thanks to the unique air straightener to optimise performance and reduce power consumption
- Totally recyclable plastic components, environmentally friendly
- Double insulated: no earth connection is required
- Forward curved centrifugal impeller, providing enhanced aerodynamic properties, low noise and increased efficiency.
- Electrical supply 220-240 V ~ 50-60Hz

Extract



For use with Titon Trickle Ventilators.



## Product Codes

### TP251HT - TIFC100HT

Intermittent Fan Centrifugal Ø100mm,  
Humidity & Timer

## Standards

Designed and manufactured in accordance with  
EN60335-2-80 (Low Voltage Directive) and the EMC  
Directive (Electromagnetic Compatibility).

Air performance measured according to ISO 5801 at  
230V 50Hz, air density 1.2 Kg/m<sup>3</sup>. CE marked.

## Specification

**Finish:** White gloss RAL 9010, UV resistant

**Materials:** Shock-proof ABS casing

**Weight:** 1.87 Kg

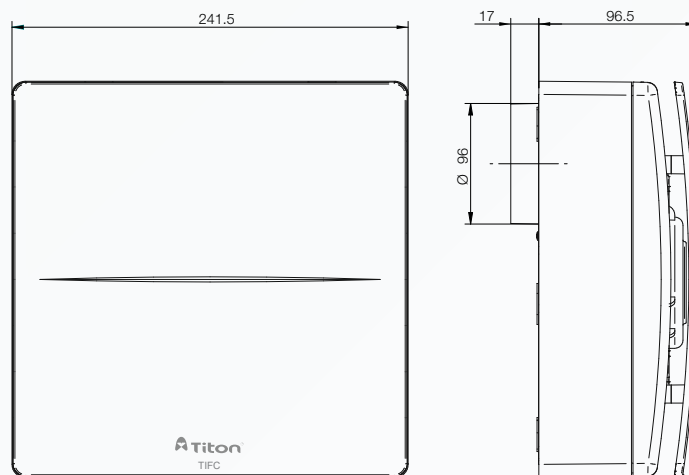
**Guarantee period:** 2 years (parts only)

**Electrical:** 220-240 V ~ 50Hz

**Installation:** Install in accordance with regulatory  
requirements, such as the Ventilation: Approved  
Document F and the Residential Ventilation Association  
recommendations.

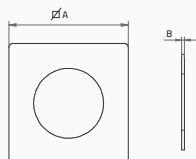
**Maintenance:** Service, clean, replace subject to local  
environment - see product manual.

## Drawing & Dimensions



Dimensions in mm

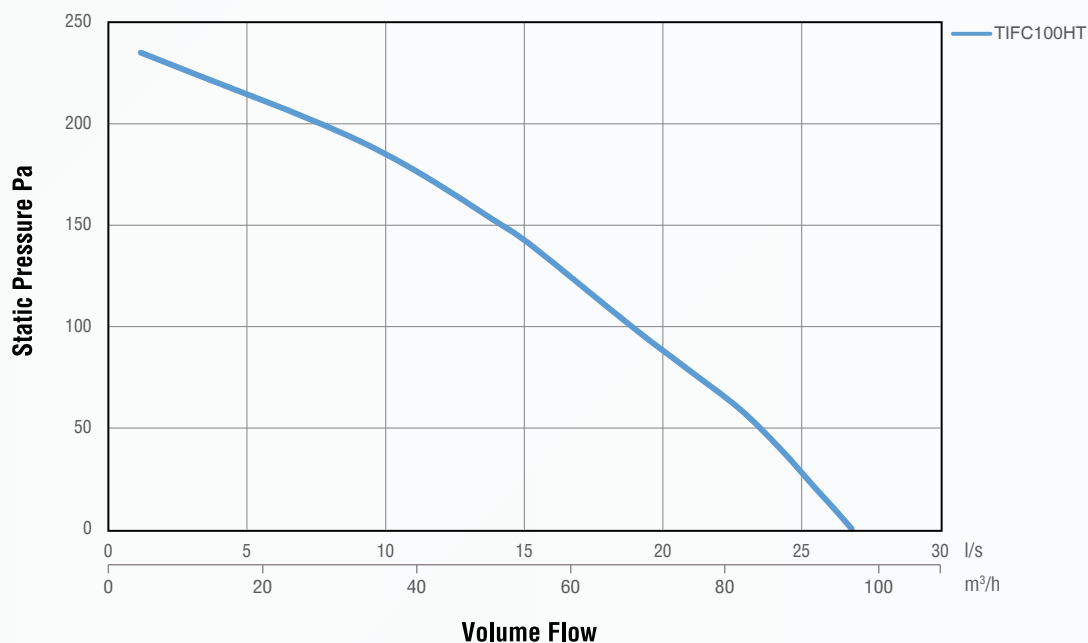
## Ceiling IPX4 Kit



Model	TP206/ Ø100
A	255
B	5

Gasket made of EPDM rubber to guarantee the IPX4  
degree of protection against moisture in case of ceiling  
installations.

## Performance Details



Model	Airflow m³/h max	Airflow l/s	Static pressure Pa max	Max power (W)	Sound pressure dB(A) @ 3m	Max ambient temp °C
TIFC100HT	97/61	27/17	235/146	28/17	38/27	50