

Vent Trex - Continuous Power Configuration

- User Guide

Read in conjunction with Common Information document

Vent-Trex is a unique combined overhead extract fan and trickle ventilator for kitchens and bathrooms that fits within the aperture on top of the window frame.

Vent-Trex is ideal for refurbishment situations where wall penetration is undesirable, as it does not damage the fabric of the building or where external aesthetics need to be preserved.

It provides a trickle ventilation performance Equivalent Area (EA) of 2500mm² minimum and extract ventilation rates to suit either kitchens or bathrooms.



Right hand option shown
(viewed from the inside)

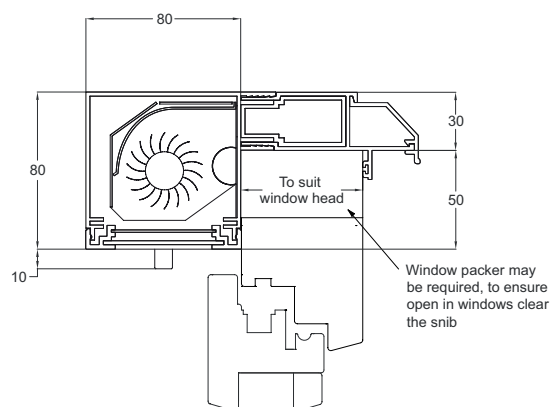
This configuration always includes a humidity sensor.

The unit is provided with a number of different options, these being:-

- Remote PSU – low voltage option for bathrooms (12v)
- External mesh - reducing the likelihood of large insects, leaf etc. entering the unit.

Available sizes

- The unit can be made to suit windows of depth from 58mm to 250mm
- Maximum single length 4000mm



	Minimum Length to Achieve 30l/s Low Speed 60 l/s high speed	Minimum achievable width*
Kitchen	1200mm	430mm

	Minimum Length to Achieve 15l/s	Minimum achievable width*
Bathroom with integral PSU	540mm	430mm
Bathroom with external PSU	540mm	430mm

*Fan lengths will vary with unit width.

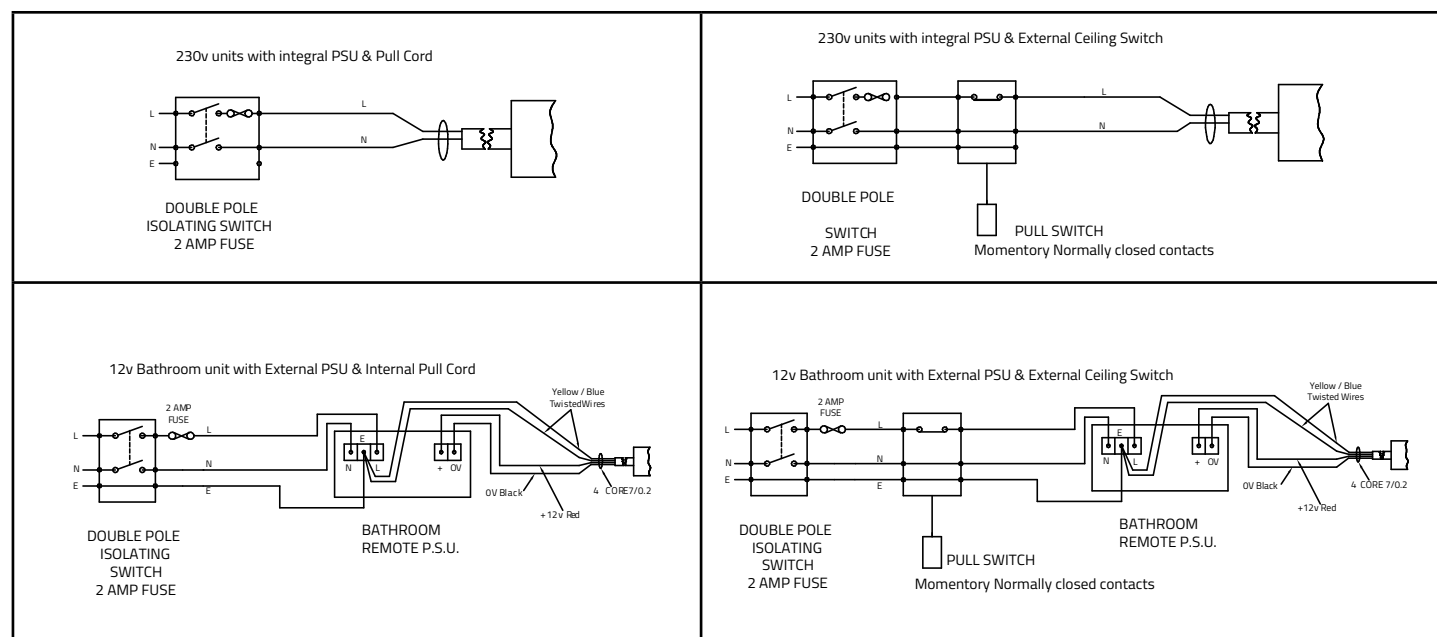
Operation

Kitchen (Two Speed)	Bathroom (Single Speed)
<p>With humidity sensor</p> <ul style="list-style-type: none"> Two speed fan (60 l/s and 30 l/s) Power to this fan cannot be switched off other than at the fused spur and will operate automatically by the humidity sensor Use snib to open slide – slide should be left open at all times The humidistat will constantly monitor the humidity and automatically start the fan when it senses a significant change. The fan will automatically stop when the humidity drops to the humidistat determined level. To start the fan regardless of humidity, pull the cord or the remote switch until the LED indicator on the fan goes off then release. The fan will run on boost for approx. 10 minutes and then automatically reduces to low speed. At low speed it will revert back to humidistat control. 	<p>With humidity sensor</p> <ul style="list-style-type: none"> Power to this fan cannot be switch off other than at the fused spur and will operate automatically by humidity Use snib to open slide – slide should be left open at all times The humidistat will constantly monitor the humidity and automatically start the fan when it senses a significant change. The fan will automatically stop when the humidity drops to the humidistat determined level. To start the fan regardless of humidity, pull the cord or the remote switch until the LED indicator on the fan goes off then release. The humidistat will determine the length of time the fan runs.
<p>Momentary Pull Cord Switch Normally On, Pull - Momentary Off</p>	<p>Momentary, Pull Cord Switch Normally on, Pull - Momentary off</p>
<p>To manually reset to boost speed pull cord and hold for 3 seconds then release</p>	

Wiring Diagrams

230v units are supplied with a 2m long two core mains cable.

Units with remote PSU are supplied with a low voltage cable 3m long to connect the Vent Trex unit to the remote PSU



Power Consumption

12V Bathroom – 5W @ 15 l/s (540mm length) (Integral PSU).

20V Kitchen – 28W @ 60 l/s (1200mm length) (Integral PSU).