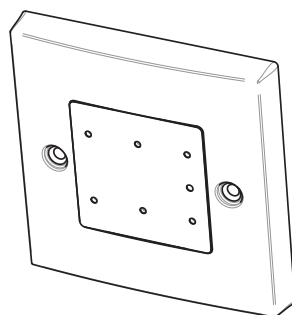


# Warnings, Safety information and Guidance

## Important Information

Read instructions fully before the installing this appliance.

1. Installation of the appliance and accessories **MUST** be carried out by a qualified and suitable competent person.
2. All wiring must conform to current I.E.E. Wiring Regulations and all applicable national standards and Building Regulations.
3. Installation must be inspected and tested by a suitably qualified person after completion.
4. Installation of the appliance must be carried out in clean, dry conditions where dust and humidity are at minimal levels.
5. This appliance can be used by children aged from 8 years and above and persons with reduced physical, sensory or mental capabilities or lack of experience and knowledge if they have been given supervision or instruction concerning use of the appliance in a safe way and understand the hazards involved.
6. Children should be supervised to ensure that they do not play with the appliance.



**auralite® HMB** TP518/EU  
**auralite® B2** TP519/EU



LED Status Indicator

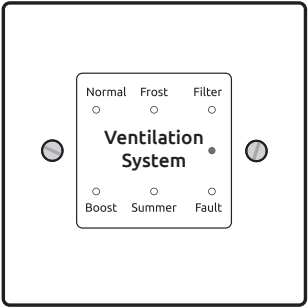
# Product Overview

## Description

**auralite®** is a low voltage hard wired remote LED ventilation system status indicator, designed to fit a standard UK patress or recessed backbox. The indicator is for use with specific Titon HRV units. The indicator has six LEDs which will display:-

## Packaging Contents

Inspect the unit when taking delivery. Check the unit for damage and that all accessories have been supplied. Package supplied with: 1 x **auralite®**, 1 x **auralite®** communication cable, 1 x Product Manual.



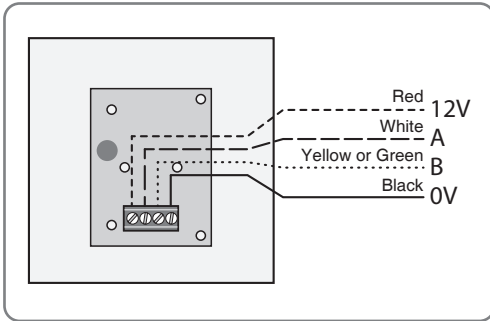
### HMB Model (TP518)

- Normal Solid light - Unit is running at Continuous Speed.  
Flashing light- Unit is running at Setback Speed.
- Frost Unit is in Automatic Frost Protection mode.
- Filter Filters require change.
- Boost Solid light unit is running at Boost Speed.  
Flashing light Boost Alert is active.
- Summer Unit is in Summer -bypass or Summer Mode; model dependant.
- Fault Unit has a fault - Contact the installer.

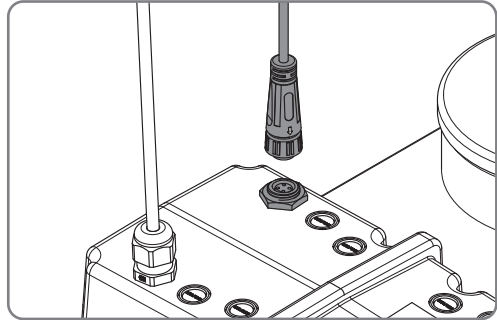
### B2 Model (TP519)

- Normal Solid light - Unit is running at Continuous Speed.  
Flashing light- Unit is running at Setback Speed.
- Frost Solid light - Unit is in Automatic Frost Protection mode.  
Flashing Light - Internal Frost Protection Mode, indoor temperature low, both fans stopped.
- Filter Filters require change.
- Boost Solid light- Unit is running at Boost Speed.  
Flashing light - Unit is running at SUMMERboost@/Speed 4.
- Summer Unit is in Summer Bypass Mode.
- Fault Unit has a fault - Contact the installer.
- Normal / Boost Alternate flashing indicates demand control from proportional sensors.

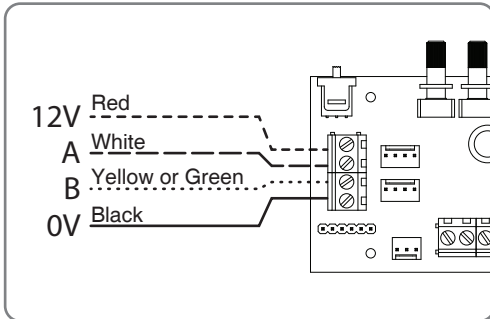
## Wiring Diagrams



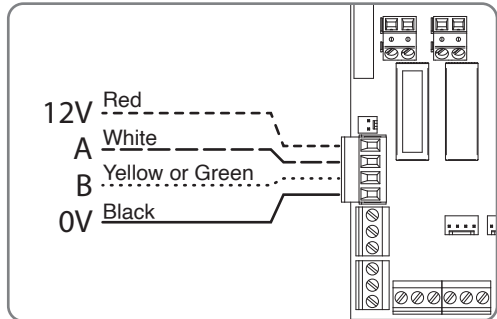
Connection to **auralite®**



Plug in connection to HRV



Connection to HMB HRV (TP518)



Connection to B2 HRV (TP519)

## Wiring

1. **auralite®** Communication Cable - Unshielded 4 Core 18-24AWG Stranded, Tinned Copper.
2. Communication cable should not be placed within 50mm or on the same metal cable tray as 230V switched live, lighting or power cables and any cables not intended for use with the HRV.

## Filter notification reset

Following a filter change to HRV the **auralite®** will require resetting, see below. Ensure the HRV is powered up.

To clear the **auralite®** filter notification press & hold the reset switch with a ball point pen or similar object for 20 seconds.

The switch is located behind the small hole in the front of the **auralite®**. All lights will momentarily be illuminated indicating a successful reset.



Installed by:

In the event of any queries please contact the system installer.  
Ensure this booklet is passed to the householder once installation & commissioning of the ventilation system is complete.

This Product Manual must be kept in the Home Information Pack.

## WEEE



This symbol on this unit or the package, indicates that disposal of this unit after its life-cycle could harm the environment.

Do not dispose the unit as unsorted municipal waste; it should be disposed by a specialized company for recycling. This unit should be returned to your distributor or to a local recycling service. Respect the local environmental rules.

## Manufacture

### **TITON Hardware Limited**

894 The Crescent, Colchester Business Park,  
Colchester, Essex, CO4 9YQ United Kingdom